

TECHNICAL SPECIFICATIONS

Count de Hoernle Amphitheater

- Stage Dimensions:** Rear Wall to Proscenium Arch: 40'
Proscenium to downstage edge: curved 12'21/2" at center
Proscenium Opening: 60 wide by 30 high
- Wings: stage right: 24'3" wide X 40' deep
stage left: 24'3" wide X 40' deep
- Stage Height: 3 1/2'
Stage and back of house = 16,696 ft
Stage = 4,411 ft.
Loading Dock/Auxiliary Room = 1,440 ft
- Amphitheater Green:** The amphitheater green is approximately 200 feet from the front of the stage to the south side of the pavilion
The width is 182 feet from the facades of the colonnades
The colonnades are 17 feet wide and approximately 195 feet long
- Seating Capacity:** 3,270 Lawn reserved seats
250 VIP Upper Deck Box
- Mix Positions:** Permanent Mix Position: 75' center from
Secondary Mix Position: 100' center
Mix Position Cover: (2) 10'X10' tents
- Rigging:** Open Beams on 12' centers
Manlift accessibility only
Perpendicular to the downstage edge
- Points available upstage and downstage of the proscenium arch. Low steel 35' from deck, High steel 45' from deck.
10,000 lbs per beam / 2,000 lbs per point
- Loading:** 2 truck covered loading dock
Must ramp from truck to dock
- House Power:** (1) 100 amp 3 phase disconnect st. left mid stage
(1) 400 amp 3 phase disconnect st. left downstage corner
(2) 200 amp 3 phase disconnect st. left downstage corner

(3) 100 amp single phase disconnect loading dock
(1) 60 amp single phase disconnect loading dock

Additional Equipment: Call Chrissy Biagiotti 393-7757

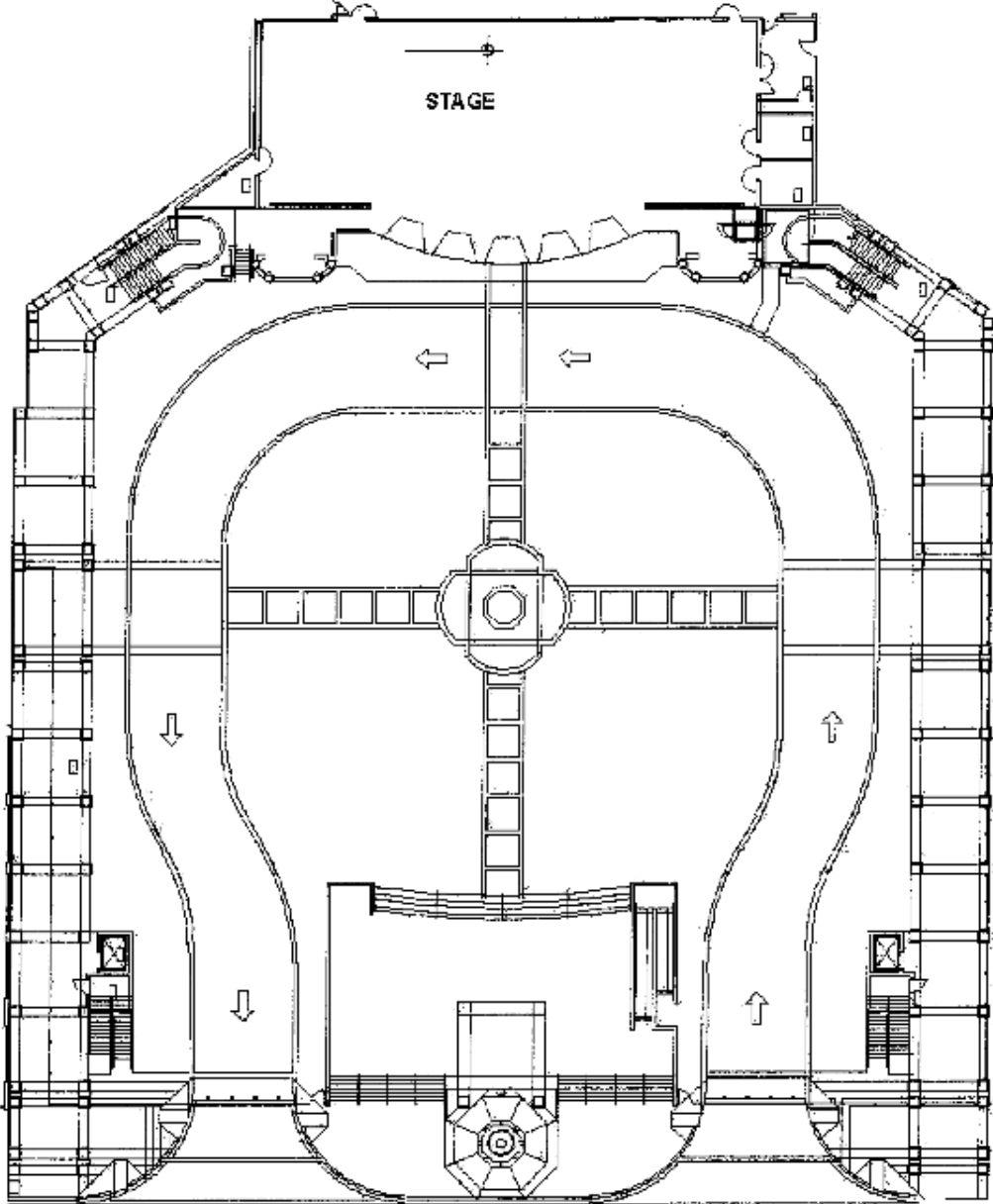
Dressing Rooms: 2 Star Rooms
4 Orchestra Rooms: All rooms are equipped with showers, toilets, mirrors and chairs ((2 rooms each are 11'x 24 1 room 15' x 23.5' ; 1 room 15' x 26')

Stagehands: Authorized Stage Labor will be determined by the Production Manager

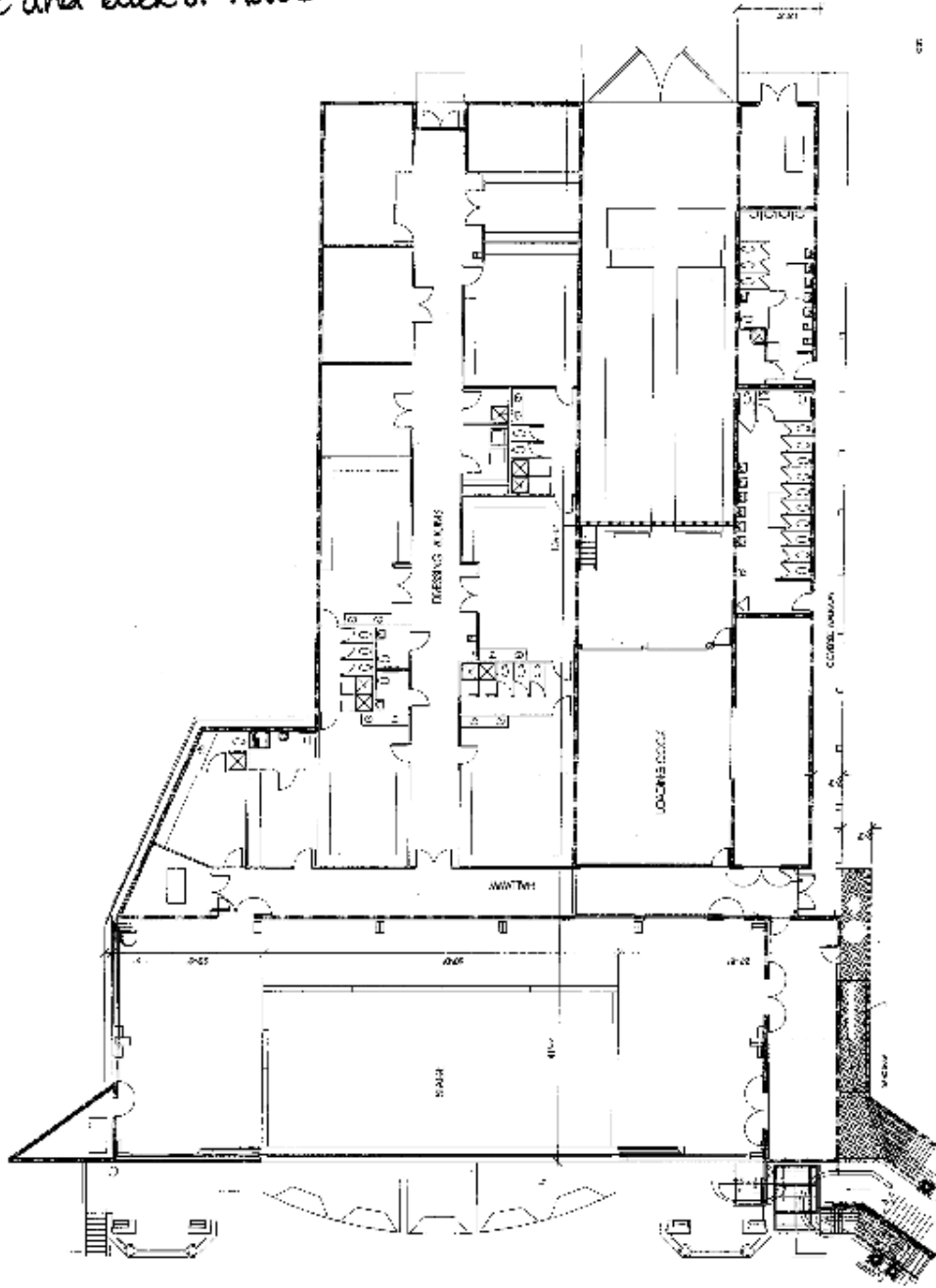
Laundry Facilities: Washer/Dryer on site

Phone/Internet: Phone available. Wireless internet access inside amphitheater is available.

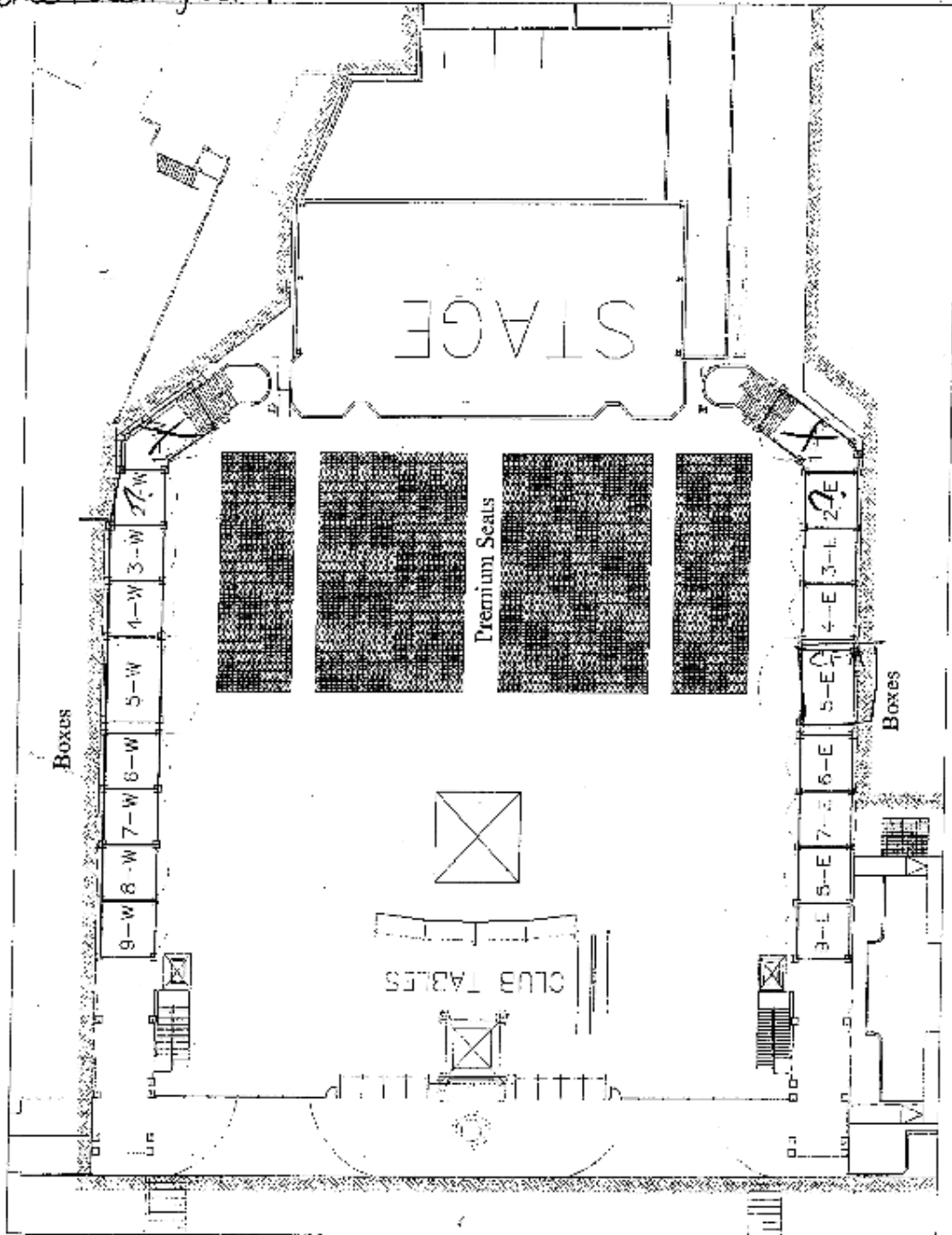
Centre for the Arts
Concert Green



Centre for the Arts
Stage and Back of house



Centre for the Arts
concert seating set-up



Centre for the Arts
Mizner Park Amphitheater

