



Computer setup for Boca ePlans (Internet Explorer)

Note: ePlans is designed to work with Internet Explorer. If you are using Firefox, Chrome, or Safari you do not need to install these tools. Please navigate to page 11.



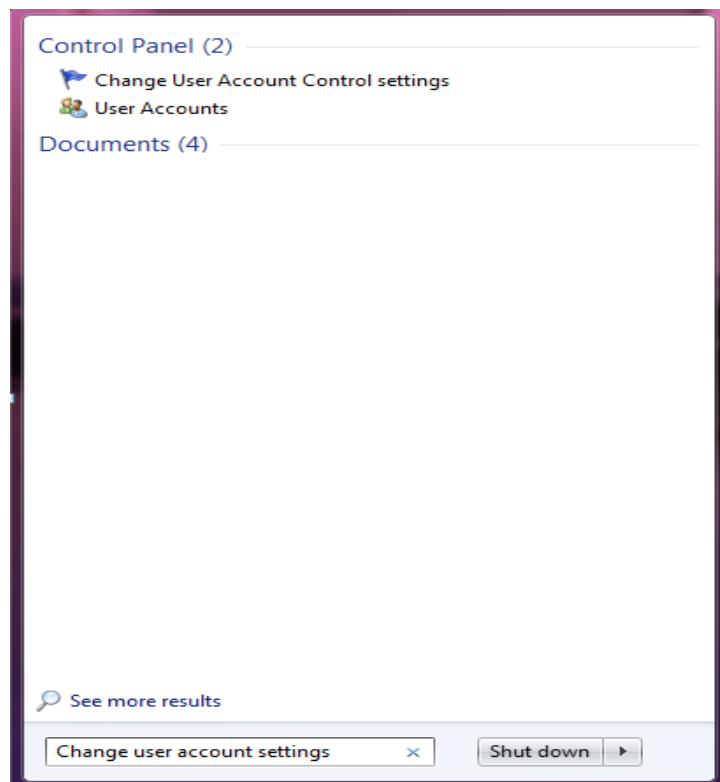
Windows 7 Setup

Windows 7™

Step 1: Disable User Account Control (UAC).

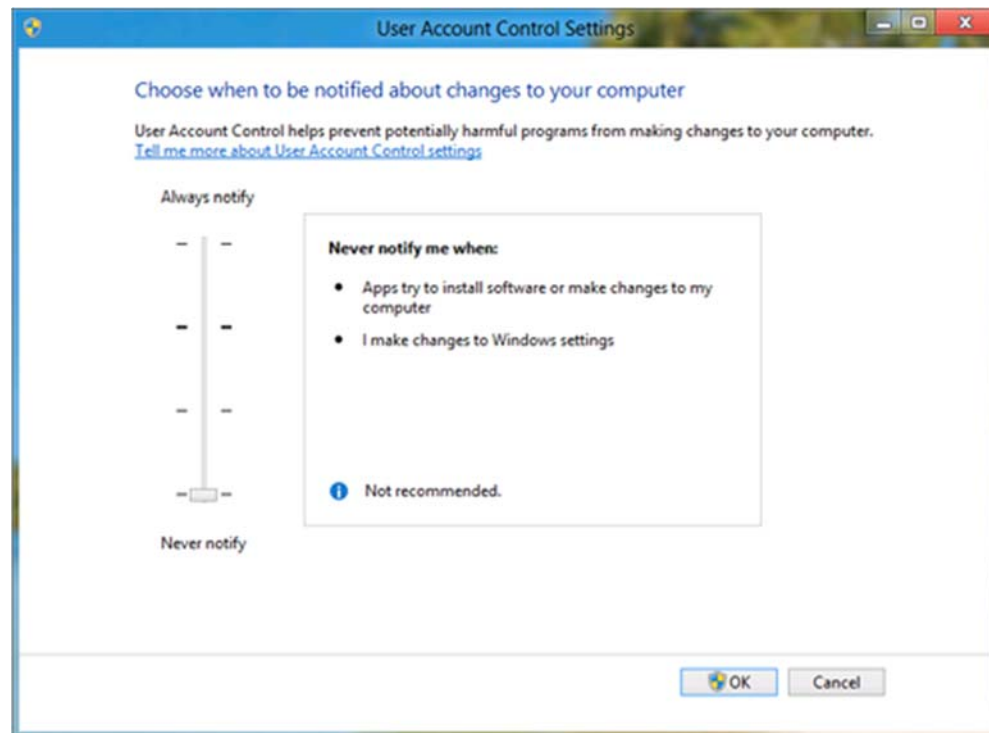
IMPORTANT! User Account Control (UAC) must be turned off PRIOR to installing the ePlans Review Components. UAC User Account Control may be turned back on after ePlan has been successfully run and allowed to install all ActiveX controls.

1. Go to the Search Charm and type "UAC":





2. To disable it, lower the slider to "Never notify":



3. Click "OK".

Step 2: Restart your computer. This is required to ensure disabling UAC does not affect the installation of the components.

Step 3: Enable Compatibility View. Most computers have received Windows updates that install the new Internet Explorer 10 which requires Compatibility View to be enabled for ePlan to work properly.

1. Open Internet Explorer and go to <https://bocaedox.ci.boca-raton.fl.us/ProjectDox/>
2. To enable Compatibility View, go to the Tools menu (if you don't see it, press the "Alt" key), then click on "Compatibility View" then select add.



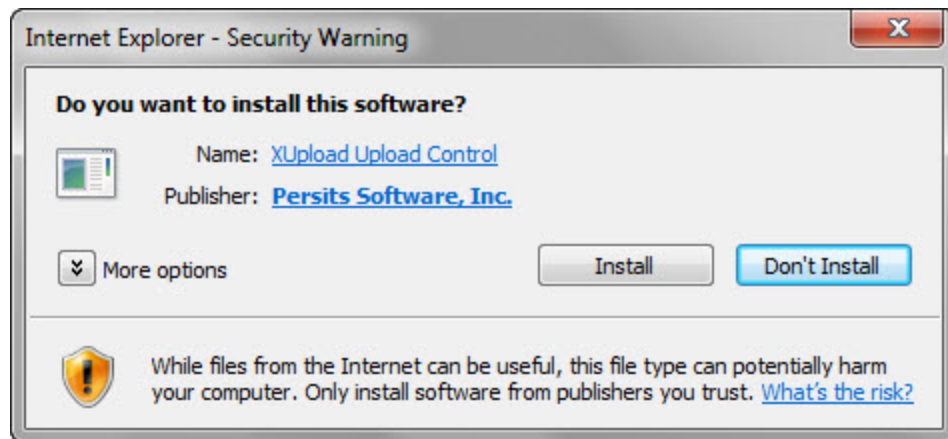
Step 4: Disable pop-up blocking. ePlan Review utilizes pop-ups. If you have a pop-up blocker enabled (enabled by default on Internet Explorer), you will have to either disable the blocker or allow an exception for the ePlan Review site.

1. To disable the blocker go to the Tools menu, Pop-up Blocker, and choose "Turn Off Pop-up Blocker."
2. Alternatively, you can keep the pop-up blocker enabled and allow an exception by:
 - a) In Internet Explorer, go to the Tools menu (if you don't see it, press the "Alt" key) – Pop-up Blocker – Pop-up Blocker Settings
 - b) In the "Address of website to allow" field, type in "bocaedox.ci.boca-raton.fl.us/ProjectDox," then click "Add."
 - c) Click the "Close" button in the lower-right corner.

Note: Other toolbars in Internet Explorer, such as Google, Yahoo, etc. often have their own pop-up blockers as well. Those toolbars, if installed, will also need to have their pop-up blockers disabled or set to allow bocaedox.ci.boca-raton.fl.us/ProjectDox/ for the site to work. Please refer to the help section of your toolbar for more information.

Step 5: Install the components.

1. Click the Install Projectdox Components link at the bottom of the ePlan Review login page.
2. After the components are installed, log into ePlan. When viewing or uploading a drawing or document for the first time on your computer, you may be prompted with a pop-up, similar to the message below. Click "Install".



Once you've completed these steps, your computer will be properly set up to use ePlan Review.

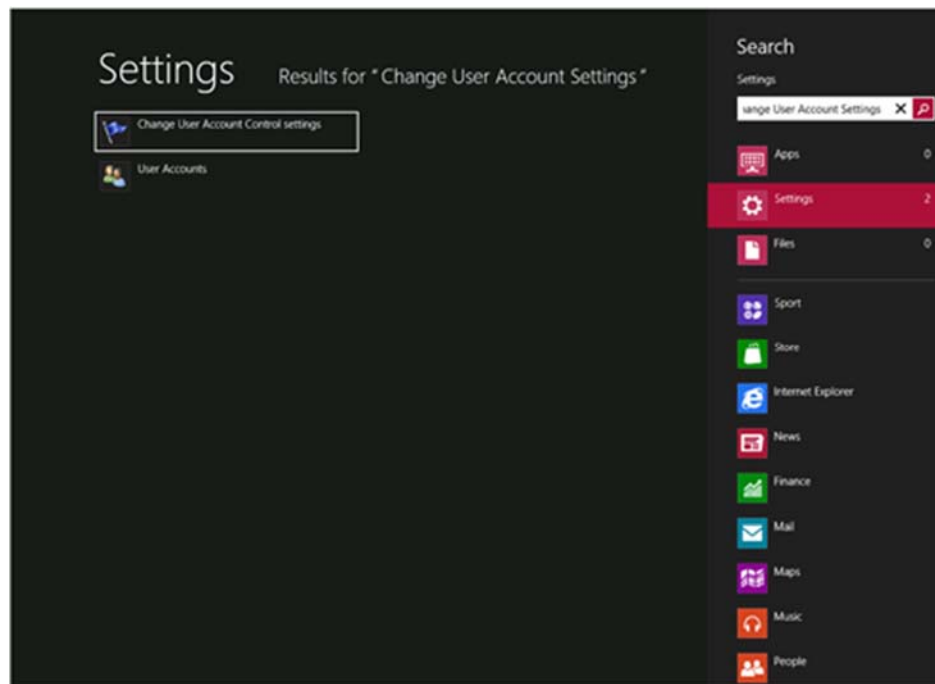


Windows 8 and 10 Setup

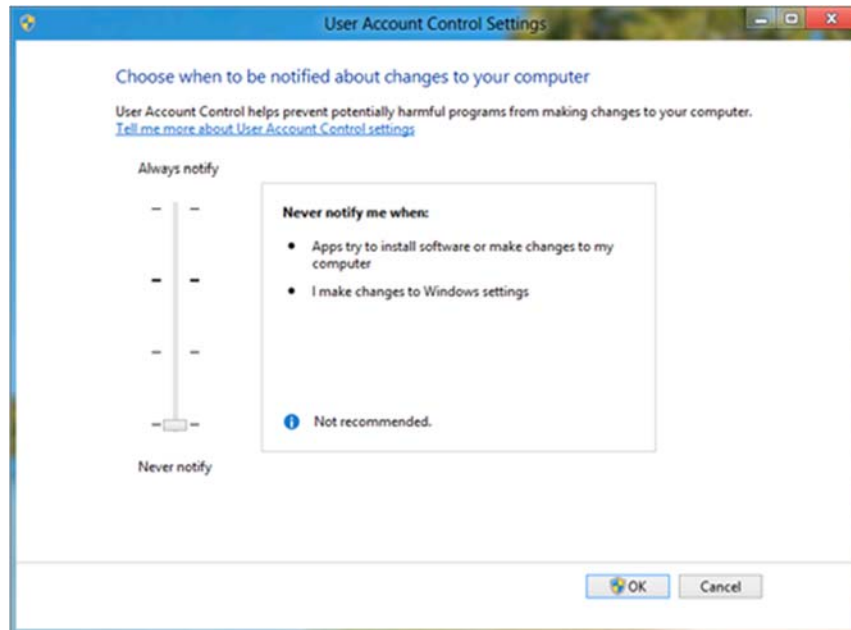
Step 1: Disable User Account Control (UAC).

IMPORTANT! User Account Control (UAC) must be turned off PRIOR to installing the ePlan Review Components. User Account Control may be turned back on after ePlan has been successfully run and allowed to install all ActiveX controls.

1. Go to the Search Charm and type "Change User Account Settings":



2. To disable it, lower the slider to "Never notify":



3. Click "OK".

Step 2: Restart Your Computer. This is required to complete the disabling of UAC so it does not affect the installation of the components.

Step 3: Enable Compatibility View. The new Internet Explorer 10 and above requires Compatibility View to be enabled for ePlan to work properly.

1. Open Internet Explorer from the Desktop (not the one on the Metro interface) and go to <https://bocaedox.ci.boca-raton.fl.us/ProjectDox/>.
2. To enable Compatibility View, go to the Tools menu (if you don't see it, press the "Alt" key), then click on "Compatibility View".

Step 4: Disable Pop-up Blocking. ePlan Review utilizes pop-ups. If you have a pop-up blocker enabled (enabled by default on Internet Explorer), you will have to either disable the blocker or allow an exception for the ePlan Review site.

1. To disable the pop-up blocker, go to the Tools menu (if you don't see it, press the "Alt" key), "Pop-up Blocker", and choose "Turn off Pop-up Blocker".
2. Alternatively, you can keep the pop-up blocker enabled and allow an exception by:

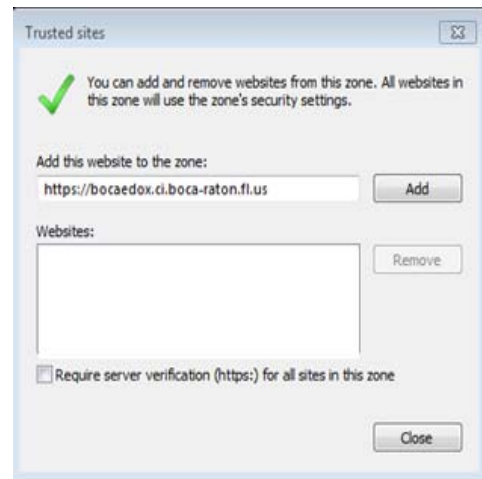
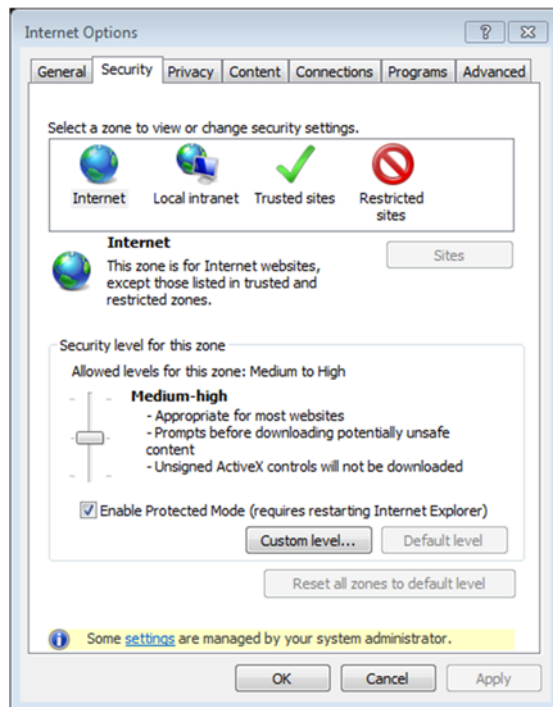


- a) In Internet Explorer, go to the Tools menu (if you don't see it, press the "Alt" key) – "Pop-up Blocker" – "Pop-up Blocker Settings".
- b) In the "Address of website to allow" field, type in "bocaedox.ci.boca-raton.fl.us/ProjectDox/", then click "Add".
- c) Click the "Close" button in the lower-right corner.

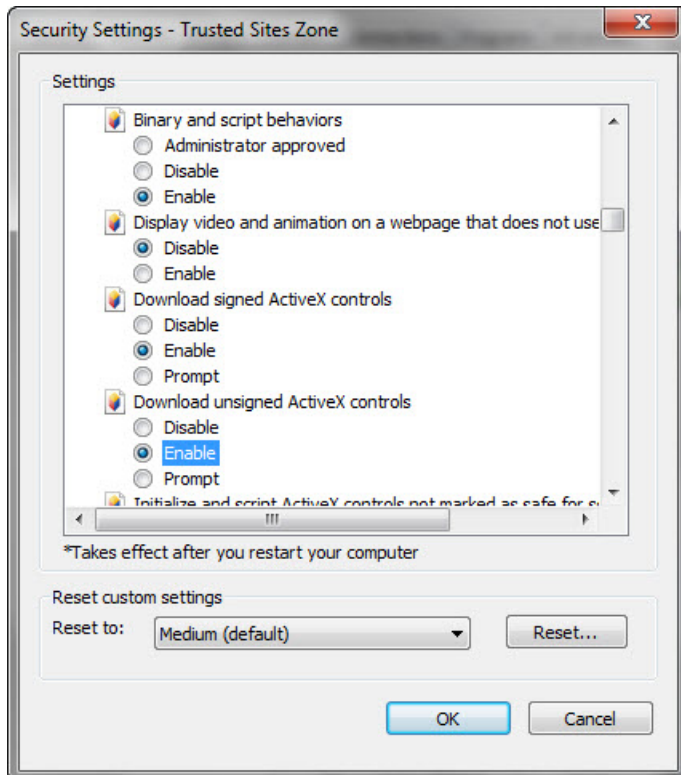
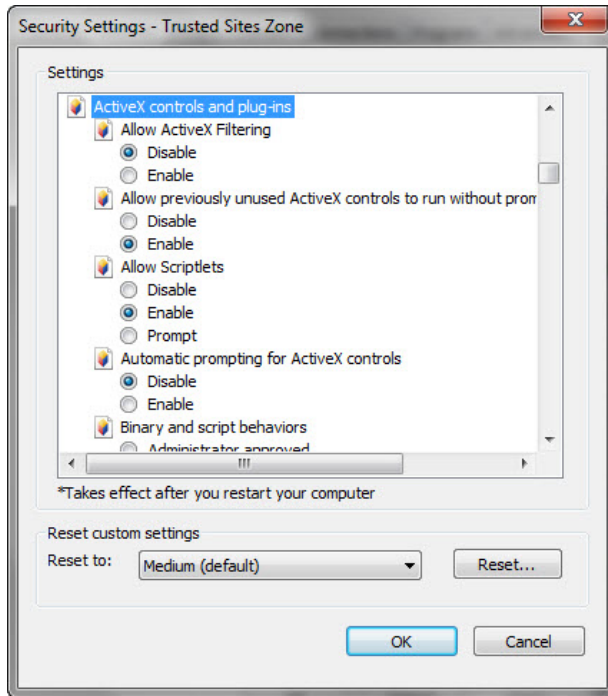
Note: Other toolbars in Internet Explorer, such as Google, Yahoo, etc. often have their own pop-up blockers as well. Those toolbars, if installed, will also need to have their pop-up blockers disabled or set to allow bocaedox.ci.boca-raton.fl.us/ProjectDox/ for the site to work. Please refer to the help section of your toolbar for more information.

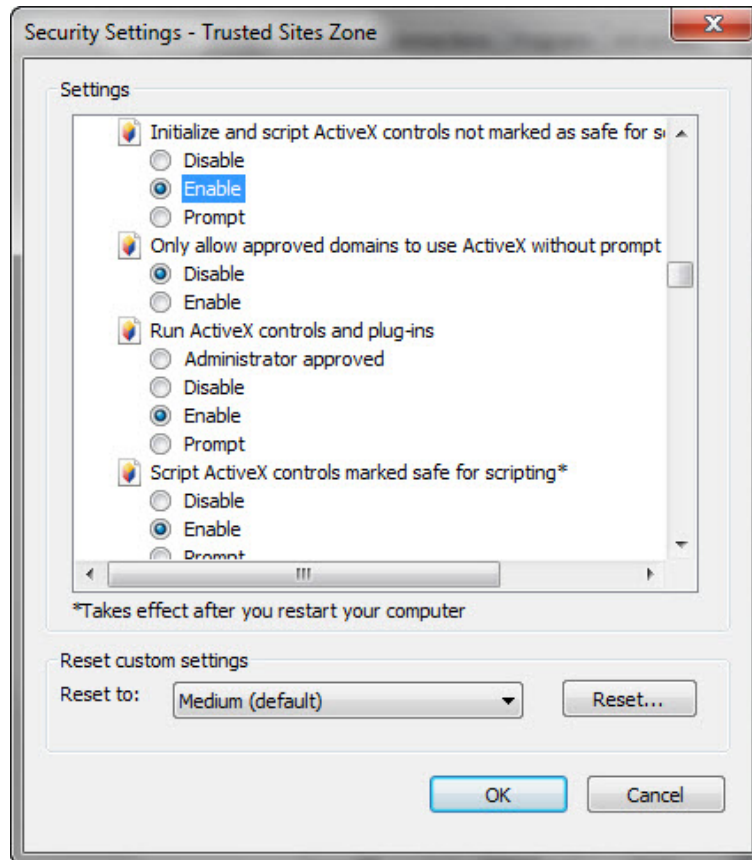
Step 5: Adjust Internet Explorer Security Settings. These settings must be changed to allow the required ePlan Active X controls to install.

1. In Internet Explorer, go to the Tools menu (if you don't see it, press the "Alt" key) – "Internet Options" – Click the "Security" tab.
2. Click on "Trusted Sites".
3. Click on "Sites".
4. Add "https://bocaedox.ci.boca-raton.fl.us/ProjectDox/" to the zone. Next, uncheck the box "Require server verification (https:) for all sites in this zone" then "Close".



5. Uncheck "Enable Protected Mode".
6. Click on "Custom level..."
7. Scroll down to "Active X Control Settings" and mirror the settings shown below.

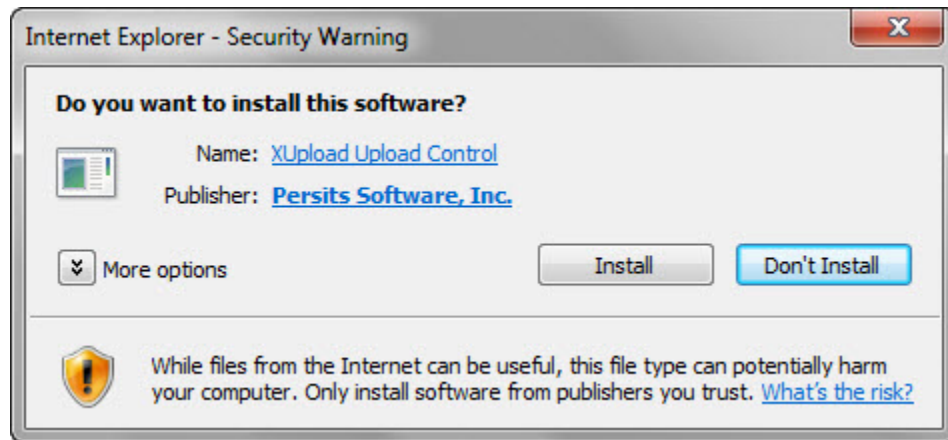




8. Reboot your computer.

Step 6: Install the components.

1. Click the Install Projectdox Components link at the bottom of the ePlan Review login page.
2. After the components are installed, log into ePlan. When viewing or uploading a drawing or document for the first time on your computer, you may be prompted with a pop-up, similar to the message below. Click "Install".



Once you've completed these steps, your computer will be properly set up to use ePlan Review.



Mac OS Setup

Step 1: Install Microsoft Silverlight.

<http://www.microsoft.com/getsilverlight/Get-Started/Install/Default.aspx>

On a Macintosh system, the following requirements must be met:

1. Mac System requirements for Silverlight 5
 - a) Macintosh OS 10.5.7+ (Intel-based), Browsers supported: Firefox 3.6+ and Safari 4+
 - b) <http://www.microsoft.com/getsilverlight/Get-Started/Install/Default.aspx>

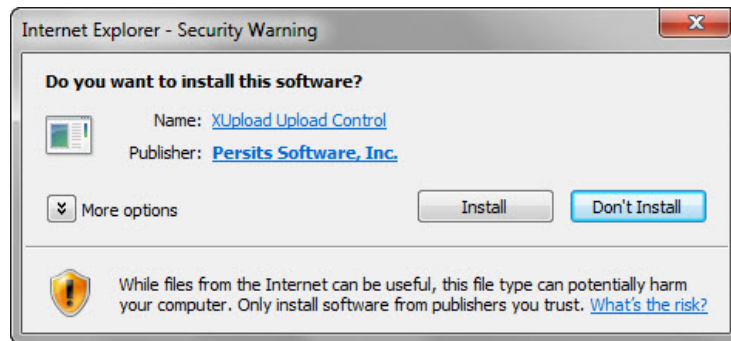
2. Mac System requirements for Silverlight 4
 - a) Macintosh OS 10.4.11+ (Intel-based), Browsers supported: Firefox 3+ and Safari 3+
**Please Note:* This older version no longer exists individually for download on the microsoft Silverlight website. Microsoft offers Silverlight 4 bundled with developer software. You must search the internet yourself and download this version from an outside third party vendor and use at your own risk.

Step 2: Install Adobe Flash Player.

1. Adobe Flash Player is required to be installed for viewing files in ePlan.

Step 3: Install the components.

1. Click the Install Projectdox Components link at the bottom of the ePlan Review login page.
2. After the components are installed, log into ePlan. When viewing or uploading a drawing or document for the first time on your computer, you may be prompted with a pop-up, similar to the message below. Click "Install".



Once you've completed these steps, your computer will be properly set up to use ePlan Review.



Other Browser Setup

Step 1: Install Microsoft Silverlight.

<http://www.microsoft.com/getsilverlight/Get-Started/Install/Default.aspx>

Step 2: Install Adobe Flash Player.

2. Adobe Flash Player is required to be installed for viewing files in ePlan.

Step 3: Install the components.

3. Click the Install Projectdox Components link at the bottom of the ePlan Review login page.

After the components are installed, log into ePlan. When viewing or uploading a drawing or document for the first time on your computer, you may be prompted with a pop-up, similar to the message below. Click "Install".

Disclaimer: The City of Boca Raton will not be responsible for any changes made to the user's computer after applying new system settings. It is the responsibility of the user to re-establish the appropriate security settings once the installation is completed. All users making changes to their computer may do so at their own risk.